

DIRECTIONS FOR THE LLANO RIVER TRIP

We will take 377 all the way to Brady, with a minor detour in Brownwood. We will then take some Farm to Market roads from Brady to Junction. This short cut saves a lot of time since Hwy 377 makes a substantial detour through Mason between Brady and Junction.

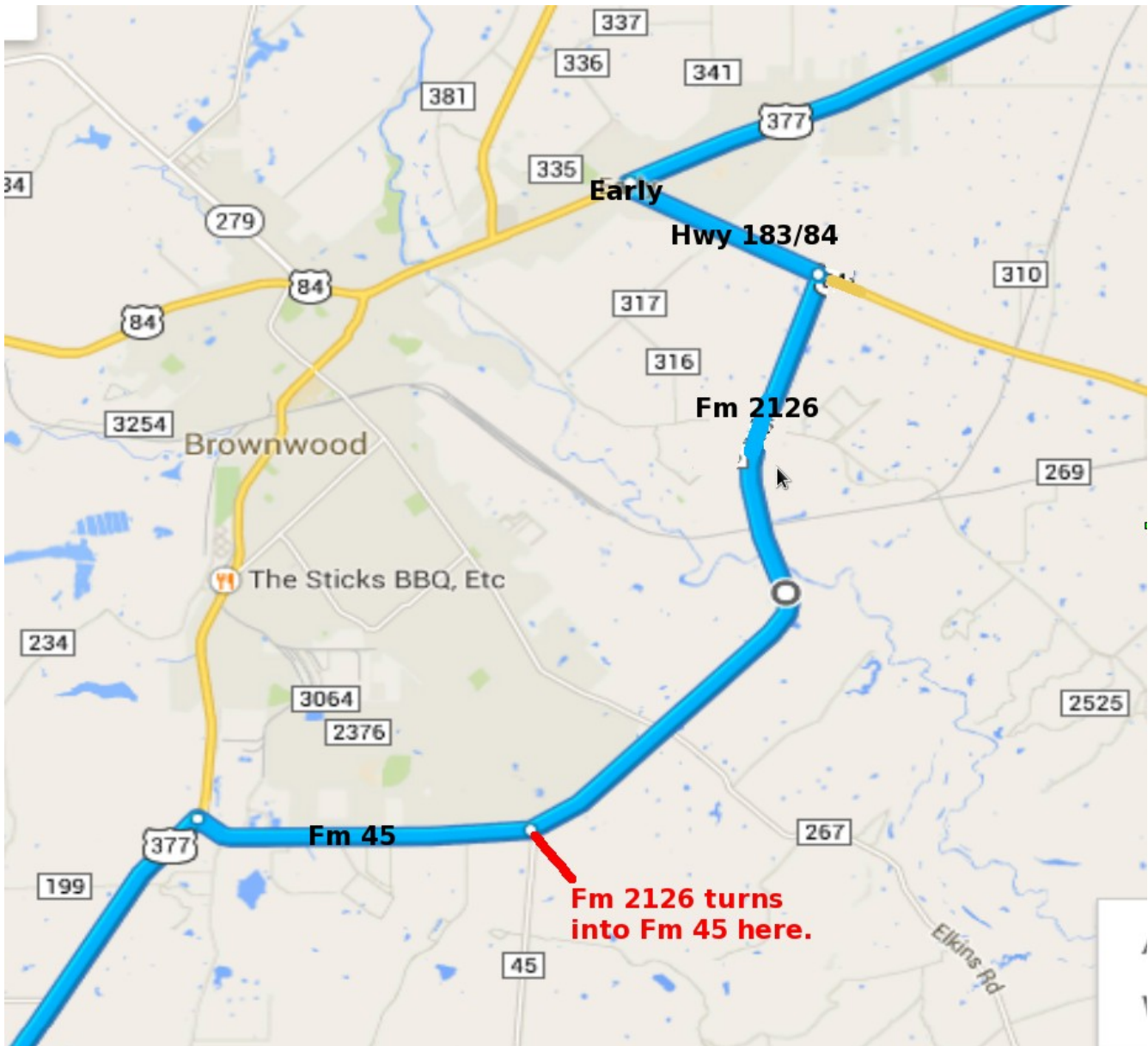
See the attached pages with route specifics....



Comanche Court House

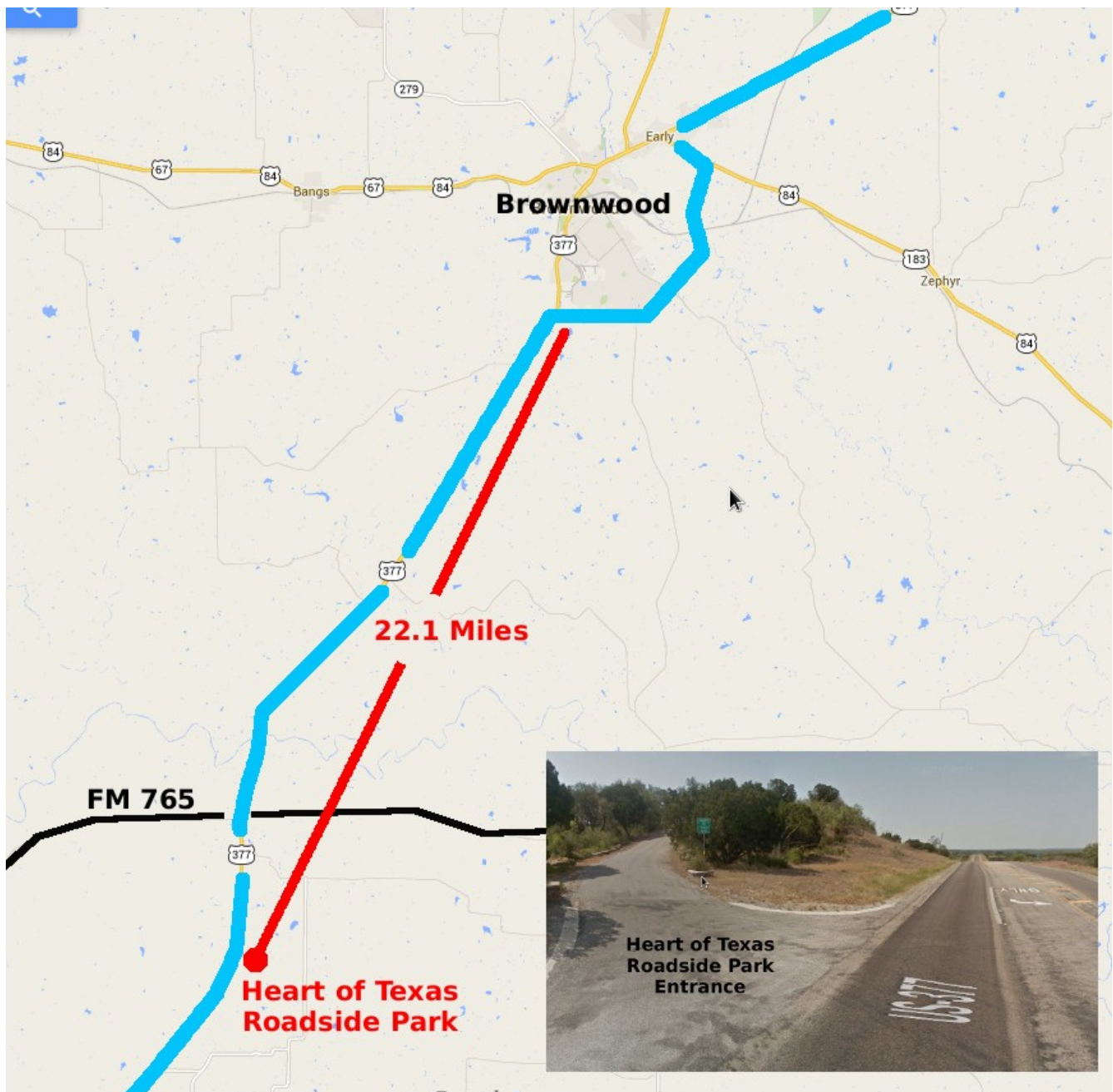
COMANCHE COURT HOUSE REGROUP

- We will regroup at the Comanche Court House. This will be beneficial in making sure no one gets lost on the Brownwood by-pass.



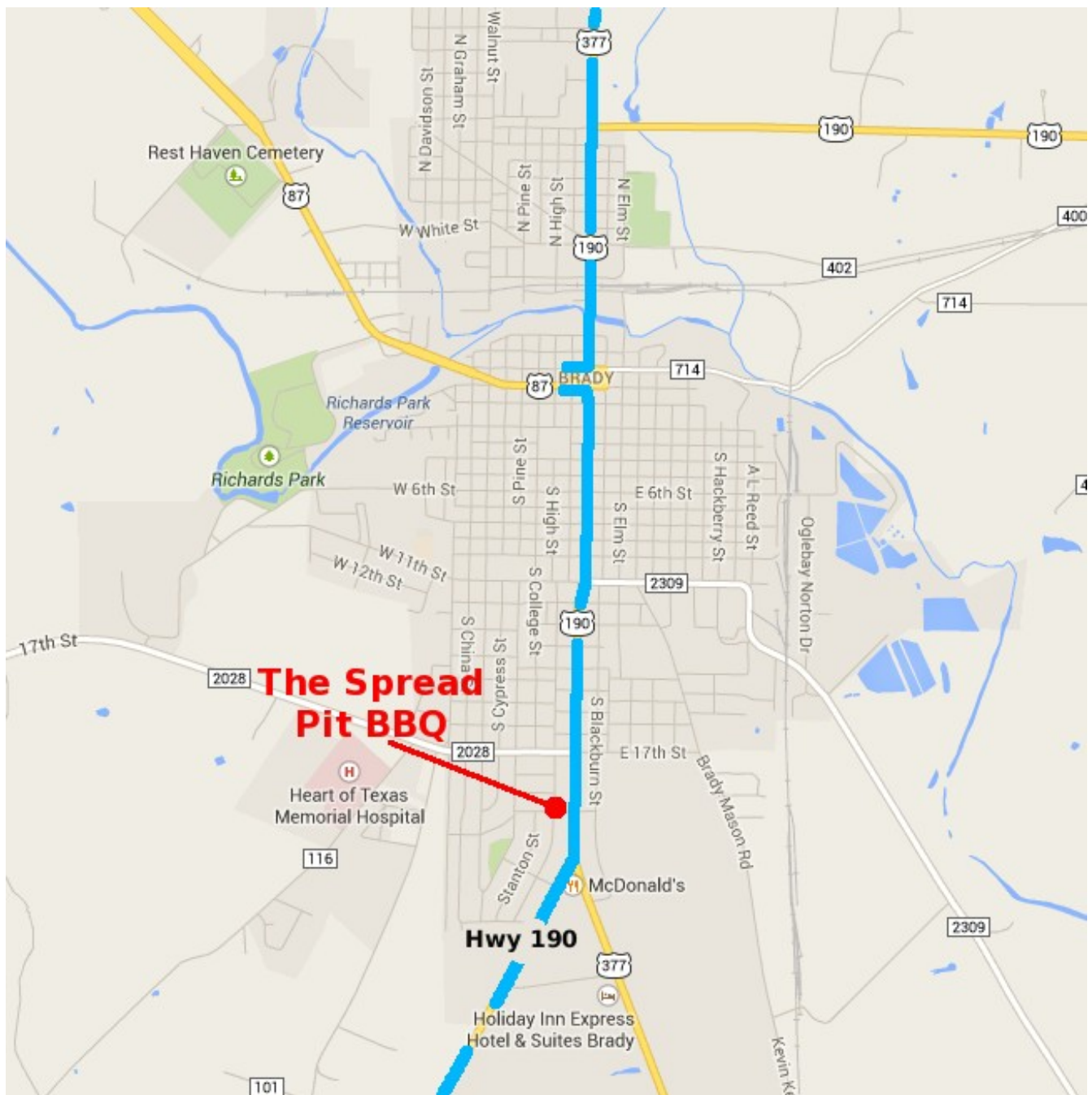
BROWNWOOD BY-PASS

- Brownwood is FULL of stop lights. This route is a little longer but a great time saver and will ensure we don't get too separated prior to the Heart of Texas Roadside Park
- In Early Tx turn left on Hwy 183/84. There is a stop light at this turn.
- Go 1.7 miles and turn right on FM 2126.
- Stay on FM 2126 for 8.5 miles.
- Turn left on Hwy 377 and proceed to Brady, Tx.



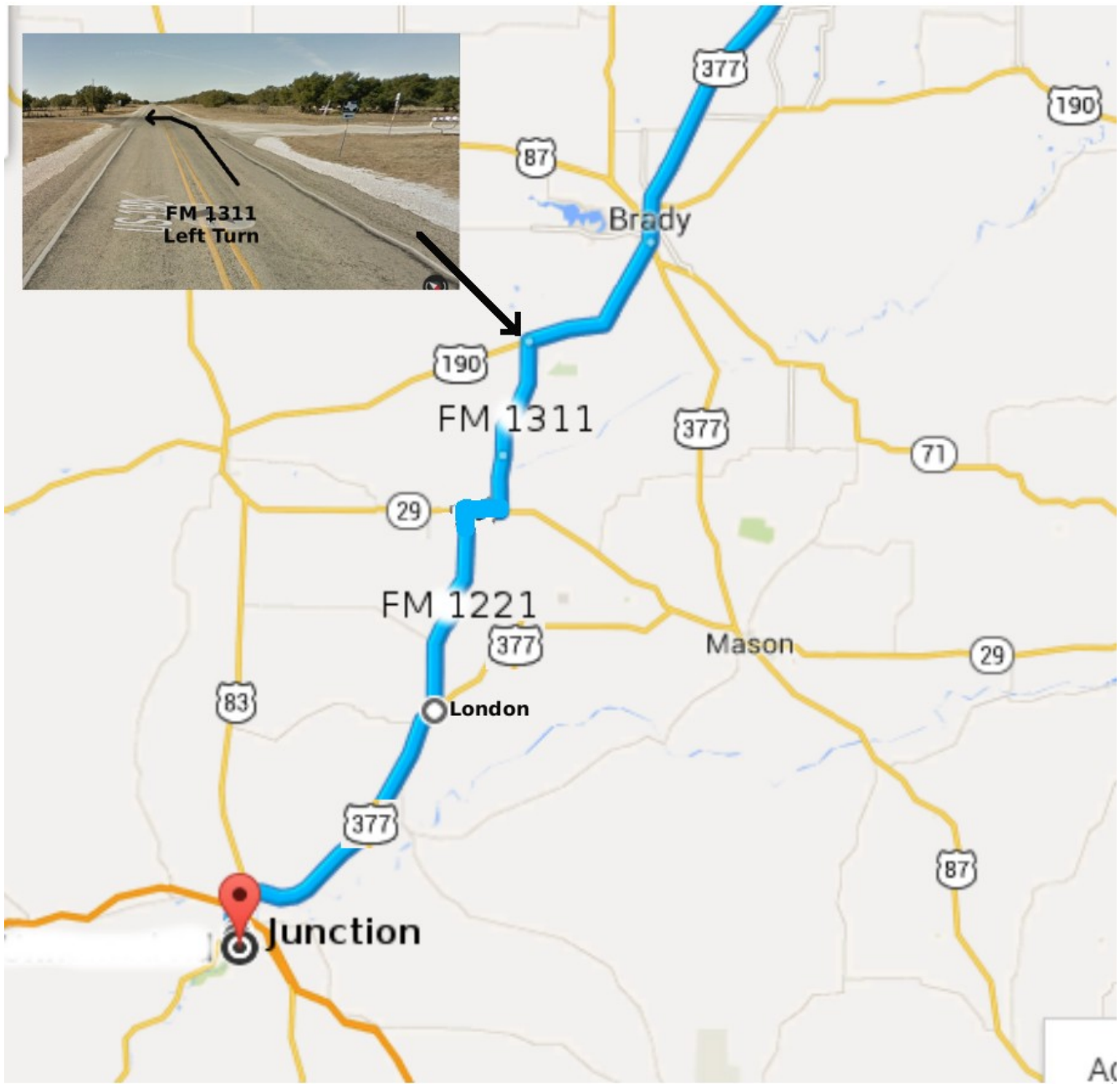
HEART OF TEXAS ROADSIDE PARK

- After the Brownwood by-pass proceed 22.1 miles to the HOT Roadside Park.
- Park will be on the left. The entrance is fairly inconspicuous so keep your eyes peeled.
- Look for FM 765. It is approximately 3.0 miles before the park entrance.
- This park has a scenic view platform with a stunning view of the countryside.



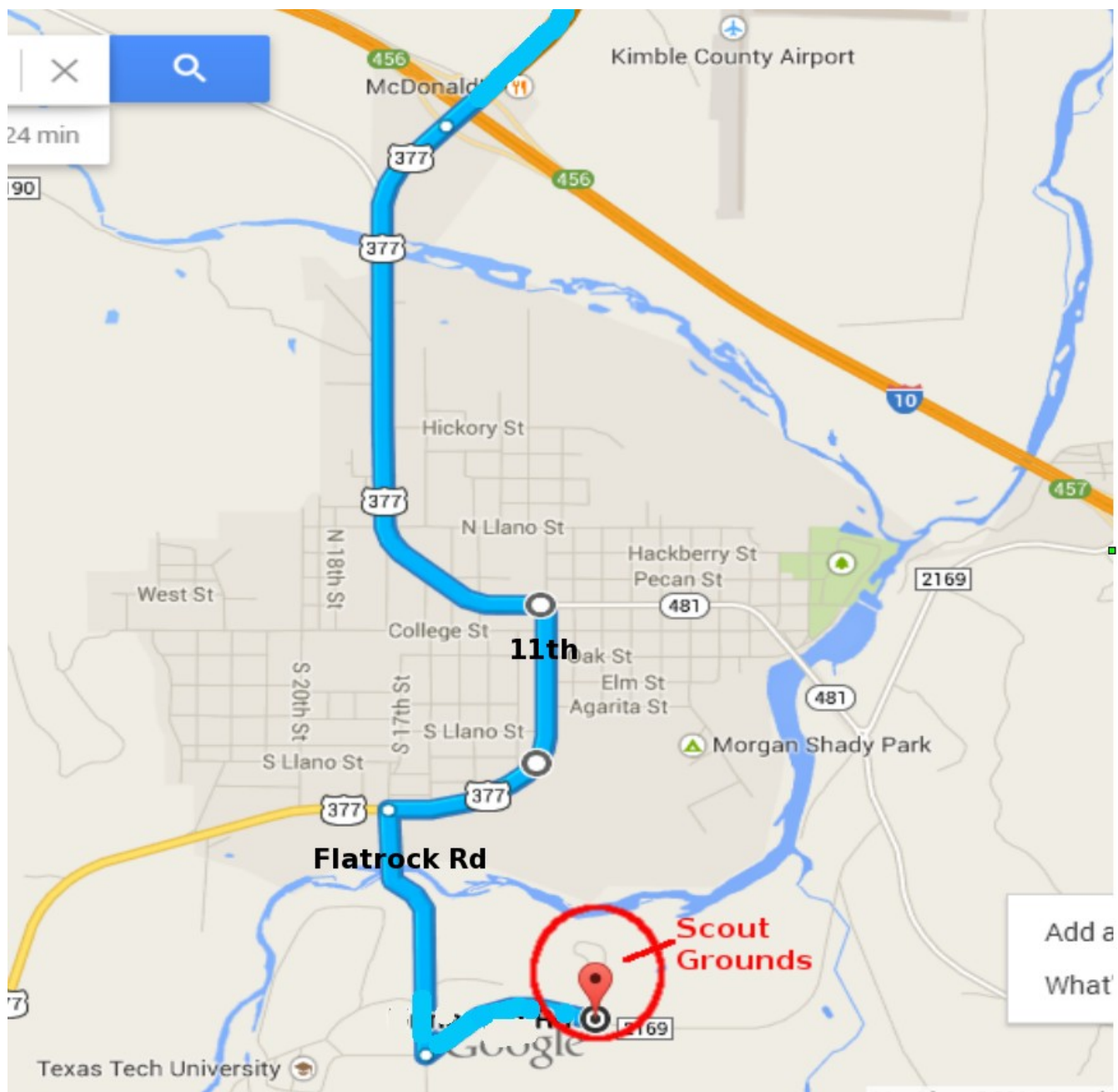
BRADY / LOCATION OF "THE SPREAD PIT BBQ"

- Proceed counter clockwise around the town square to stay south on Hwy 377.
- Turn right(west) on Hwy 190 on the south side of town. There is a McDonalds at the turn.



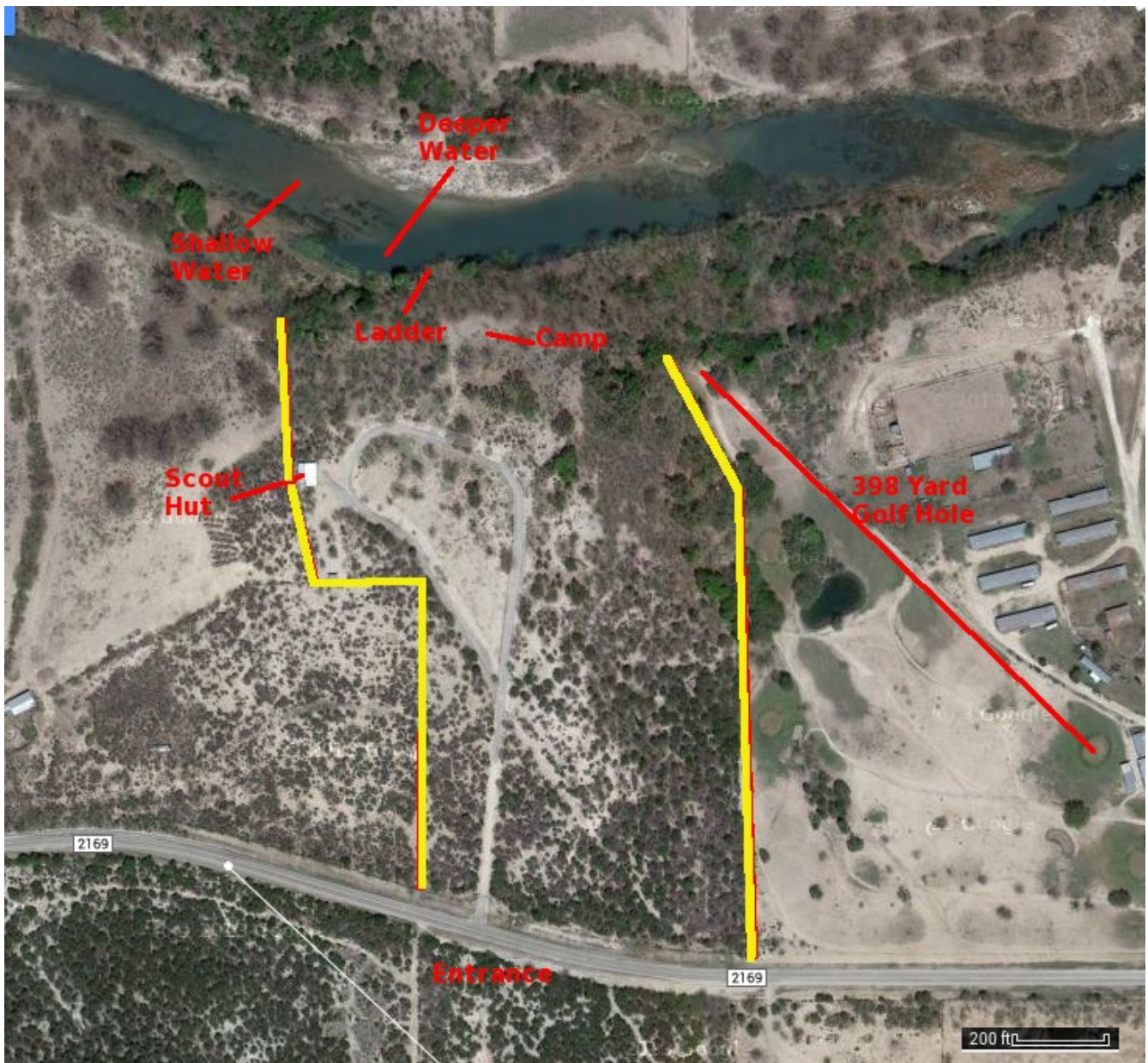
BRADY TO JUNCTION

- On the south side of Brady turn left(west) on Hwy 190.
- Proceed 10.7 miles and take a left(south) on FM 1311.
- Proceed 11.1 miles and take a right(west) on Hwy 29.
- Proceed 2.0 miles and take a left(south) on FM 1221.
- Proceed 13.1 miles and take a right(west) on Hwy 377.
- Stay on 377 on in to Junction. You will merge with Hwy 83 just north of Junction.



TO THE SCOUT GROUNDS

- Stay on 377 through Junction.
- Turn right on 377/11th Steet.
- Turn left on Flatrock Rd.
- Proceed 0.75 miles and turn left on FM 2169.
- Proceed 0.5 mile to the Kimble County Scout Grounds. Entrance is on the left.



KIMBLE COUNTY SCOUT GROUNDS

- Grounds outlined in yellow.
- Troop 420 SM says they don't cross any fences, but they do swim off the far shore.
- The river is public access which includes the river banks.